



For stove ranges:

Puffin

Heron

Esprit Solo / Duo **Flexifuel**

Chelsea Solo / Duo

Chelsea HE Solo / Duo

Bayswater

C Flat Wood Solo / Duo

Flatmate

A Flat Wood

PLEASE RETAIN THIS GUIDE FOR FUTURE REFERENCE

BK550 Rev 04

EN 13240:2001+

Amd. A2



MADE IN BRITAIN

October 2013



More than 30 years experience has been put into the development of our stoves to ensure ultimate performance and years of trouble free use and enjoyment.

Every detail of the stove has been carefully designed and engineered which is why we are so confident in the reliability of our products.

Should you have any questions about our stoves that are not covered by this manual, please contact the Arada retailer in your area, or call our technical support department on

08448 567181 .

All Arada stoves are tested to European Standard EN 13240.

WARNINGS

Pure Petroleum coke or Bituminous house coal must not be burned in this appliance. The use of these fuels will invalidate the appliance guarantee.

Arada recommends the use of HETAS approved smokeless fuels which have been deemed suitable for use on closed appliances, including multi fuel stoves.

If in doubt, contact The Solid Fuel Association, telephone: 0845 601 4406 / 01773 835400 or visit www.solidfuel.co.uk

It is a legal requirement that the installation of all new or replacement, wood or solid fuel heating appliances must obtain building control approval from your local authority. This can be done by using a qualified heating engineer, affiliated to a government approved competent persons scheme such as operated by HETAS.

If in doubt, contact HETAS limited, telephone: 0845 634 5626 or visit www.hetas.co.uk

A fireguard conforming to BS 8423:2002 should be used in the presence of children and old or infirm people. Do not use aerosol sprays or any other flammable materials near the appliance when in use.

Arada Ltd will not be responsible for any consequential or incidental loss or injury however caused. Arada has a policy of continuous product development and therefore we reserve the right to amend any product specification without prior notice.

OPERATING YOUR STOVE

Villager stoves are designed to be operated with the fire door(s) closed at all times, apart from refuelling (when alight) or cleaning (when cold).

Never leave the appliance unattended for an extended length of time with the door(s) open.

Visit our Youtube channel for our 'how-to' series of videos:

<http://www.youtube.com/aradastoves>

FUEL TYPES

WOOD

Any type of wood is suitable provided it is well seasoned and has a moisture content below 20%. This usually implies that the timber has been suitably stored to allow moisture to evaporate for at least nine months in the case of soft wood, and at least twenty four months in the case of hard wood. We recommend that for general burning wood should be split into logs of no more than 100mm (4") diameter.

WARNING: Wet wood must not be used as this will greatly contribute to the creation of tar and creosote which may, in extreme cases, run down the chimney in liquid form. This will seriously damage both the chimney and the appliance and increase the risk of a chimney fire.

Please Note: If you have sticky tar inside the appliance or chimney your wood is 'green' or too wet.

PAPER – Paper will burn successfully. Burn dry paper only or chimney damage will occur.

WARNING: NEVER BURN PLASTICS, HOUSEHOLD WASTE OR LIQUID FUELS IN YOUR STOVE.

SOLID FUEL

Arada recommends the use of HETAS approved smokeless fuels which have been deemed suitable for use on closed appliances, including multi fuel stoves. These include:

Homefire Ecoal Instant Light	Taybrite
Homefire	Newflame
Homefire Ovals	Maxibrite
Supertherm	Sunbrite
Ancit	Pureheat
Phurnacite	Homefire Ecoal



For additional advice on fuels, please refer to The Solid Fuel Association.

LIGHTING THE FIRE

Prior to lighting the stove for the first time, check with the installer that:

- Installation and all building work is complete.
- The chimney is sound, has been swept and is free from obstruction.
- Adequate provision for combustion air has been made, i.e. a permanent vent of at least 550mm sq. per kW of rated output above 5kW, is fitted in the room in which the appliance is installed.
- Building Regulations and any local by-laws have been followed during installation.
- All firebox liner panels and throat plate are in place.

USER GUIDE

- That the chimney draw has been checked and is within specification. With the chimney warm, the draught should be between 1-2 mm water gauge or 0.1 to 0.2 mbar.
- A Carbon Monoxide detector is correctly installed in the same room as the appliance.

WARNING: An over drawing chimney can cause over firing, resulting in damage to the appliance.

Ensure that you have read and understood these instructions before lighting the fire.

Always wear suitable protective fire gloves when refuelling your stove, such as the Arada glove supplied with your stove.

We recommend that you light a small fire for the first few days of use to cure the paint and allow the castings to relax. It is normal to experience some odours whilst the paint cures. These are non-toxic and temporary.

AIR INLET CONTROLS

Your stove has two air inlet controls. These are located either on the stove body or the door.

The primary air inlet provides under draught to the base of the fire chamber and the airwash system (secondary air) provides overdraught. *The exact controls may differ from those illustrated in this manual but will work in the same way.*

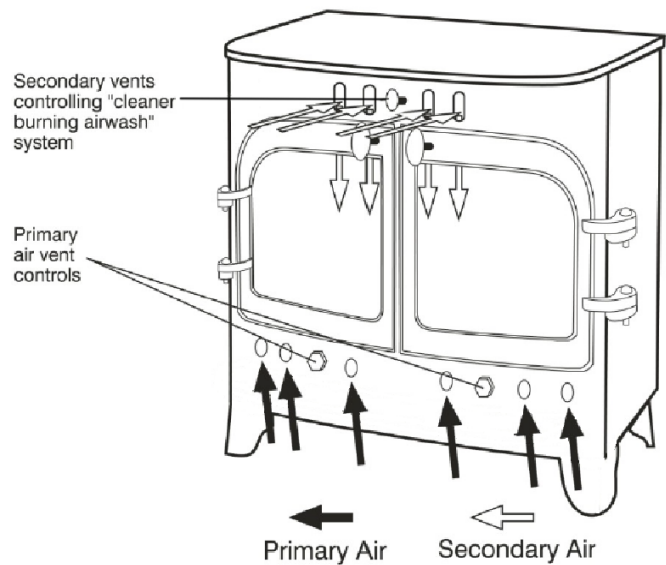
PRIMARY AIR

Air enters the appliance through the control on the bottom of the door. Your stove will have either one or two control knobs (depending on the model) which slide left to right. Opening this / these air inlet(s) will increase the amount

of air intake to the stove. Similarly, closing these controls will decrease the amount of air intake into the stove.

AIRWASH SYSTEM / SECONDARY AIR

The airwash system is located either above or towards the top of the fire door. This functions in the same way as the primary air inlet controls.



BURNING WOOD

- On stoves with the **Flexifuel** system, the riddling lever should be pushed in.
- Set the fire by using scrunched up newspaper and place a layer of dry kindling wood on top of this.
- The use of two or three fire lighters may assist to light the kindling.
- Set the primary air and airwash controls to the fully open position.
- After the kindling has caught light, you should leave the fire door ajar by about 20mm. This will aid flue draw.

- The flue draw should be established after five minutes and the kindling reduced to form an ember bed.
- Carefully load the stove with well seasoned wood and close the fire door.
- After ten to fifteen minutes regulate the airwash control, typically reduce to approximately half way.
- Close the primary air control as generally no air is required from below the fuel when burning wood.

Please Note: The high temperature paint acquires durability by being “cured” during the initial firings of the appliance. It will give off fumes which are non toxic, but certain persons may find they have an unpleasant or irritant effect. Ensure that the surrounding area is well ventilated during this time.

BURNING SOLID FUELS

Only applicable to multi fuel and **Flexifuel** stoves.

- On stoves with the **Flexifuel** system, the riddling lever should be pushed in.
- Set the airwash to one quarter open.
- Set the primary air inlet to fully open.
- Light as with wood, with kindling and fire lighters.
- Once flue draw has been established, after about five minutes, carefully load the stove with fuel and close the door.
- When the fire is well alight regulate the burning rate by controlling the primary air inlet control.
- The airwash should be opened sufficiently to keep the door glass clean.

Whilst burning solid fuel it can be beneficial to occasionally riddle the grate bars so any burnt fuel will fall between the grate bars into the ash pan below. This will ensure a good under draught is maintained.

WARNING: Properly installed, with a suitable flue or chimney, operated and maintained correctly, this appliance will not emit fumes into the dwelling.

Occasional fumes when de-ashing and refuelling may occur. However, persistent fume emission is potentially dangerous and must be investigated by a HETAS registered installer.

Stop using the appliance if you smell fumes or see smoke escaping.

If fume emission does persist, the following immediate actions should be taken:

- Open doors and windows to ventilate room.
- Let the fire die or extinguish and safely dispose of fuel from the appliance.
- Check for flue or chimney blockage, and clean if required.

Seek expert advice from your HETAS registered installer. Do not attempt to re-light the fire until the cause of the fume emission has been identified and corrected.

DEDICATED WOOD BURNING STOVES

Villager wood burning stoves are fitted with liners to both the sides and base of the stove. Wood fuelled fires burn best on a bed of ash and with air for combustion being introduced from above the flame.

The liners are provided to insulate the stove and allow a more consistent heat output.

USER GUIDE

Cracked liners do not need replacing as long as they still remain in situ. However, a crumbling liner or one which does not remain in situ should be replaced.

MULTI FUEL OR FLEXIFUEL GRATE

The grate in your Villager stove comprises of a series of reciprocating cast iron bars seated on a pivoted comb. These should come pre-assembled in your new stove.

All bars in the grate are identical, but every other bar is rotated 180 degrees, with the ends of the bars marked 'H' sitting on the high sections of the comb, and the ends marked 'L' sitting on the low sections.

The riddling lever, either on the side or front of the stove, can be operated with the stove operating tool to riddle ash into the ash pan below. Only riddle the stove with the door closed and stop once red embers begin to fall into the ash pan.

After extended use it may be necessary to replace some of the grate bars. Periodic inspection of the bars is recommended and any damaged bars replaced. Also check for obstructions that may prevent the operation of the riddling mechanism.

DOOR GLASS

The door glass should remain clear during normal burning. However, under certain conditions, such as burning at a low rate, using damp wood or overnight burning, the glass may become somewhat blackened. To remedy this, operate the appliance at a fast rate. Alternatively when the stove is cold, open the door and clean the inside face of the glass with a damp cloth or with glass cleaner

(available from stove stockists and online at www.aradastovesandspares.com).

REDUCED BURNING

When wood is burnt slowly in a closed appliance, it produces moisture and tar, which will create condensation and deposits in the chimney. This effect can be minimised by burning hard for a short period, fifteen to twenty minutes, twice a day.

Please Note: To avoid chimney problems your appliance should not be burnt at a reduced burn rate without a period of fast burning.

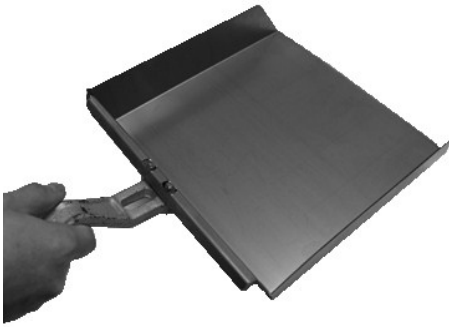
OVER FIRING & CHIMNEY FIRES

DO NOT over fire your appliance. Firing the stove at maximum for prolonged periods may result in over-firing. If the chimney connector or casing glows red the appliance is being over-fired, this may result in a chimney fire.

ASH REMOVAL

The appliance will require ash to be removed periodically but an ash bed of approximately 20mm (3/4") should be maintained. Care must be taken not to burn hands or household objects with falling embers.

If your stove has an ash pan it should be emptied when the level of ash reaches the top of the ash pan. On no account should the ash be allowed to build up to touch the underside of the grate bars, as this will greatly reduce the life time of the grate. The ash will require less frequent removal when burning wood than solid fuels.



In dedicated wood burning stoves the ash should only be removed when the wood has reduced to embers. To remove the ash, carefully rake the glowing embers to one side of the fire bed and remove the ash into a suitable metal ash container. This ash will be hot and the ash carrier may also become hot. Care must be taken that these do not come into contact with combustible materials until they are no longer hot. Repeat for the other side of the fire bed.

WARNING: The ash can be very hot. Empty only into a metal container. Even if the ash appears cold, red-hot embers may be concealed and could easily start a fire or cause an injury.

MAINTENANCE

SUMMER STORAGE / NON USAGE

Please ensure that your stove is left clean and moving components are well lubricated for the summer months (during periods of prolonged non-use). If possible store the throat plate outside of the stove. Check all moveable components at regular intervals, to ensure they are moving freely.

Allow air movement through the stove, by opening the airwash and primary air inlet control(s) to about half way, open or leave the door ajar. This will allow a free flow of air through the appliance thus preventing moisture and condensation forming inside the stove and chimney. This preventative maintenance will ensure your stove stays in the best condition for the coming winter months.

REPLACEMENT PARTS

As a leading manufacturer we are conscious of being able to support all our stove users online and via our network of dealers with the supply of spare parts to ensure your continued enjoyment and warmth from your Arada stove.

You can find essential spares and consumables such as liners, grate bars and throat plates as well as items to enhance your stoves visual appearance and efficiency such as Arada anthracite stove paint and rope kits at:

www.aradastovesandspares.com

The screenshot shows the website interface for Arada Stoves and Spares. The main navigation bar includes the logo, a search bar, and a 'Login' button. Below the navigation, there are links for 'Arrow Stove Spares', 'Hamlet Stove Spares', 'Villager Stove Spares', and 'Stratford Boiler Stove Spares'. The breadcrumb trail indicates the current page is 'Home > Villager Stove Spares > Multi Fuel Stove Spares'. The main content area is titled 'Multi Fuel Stove Spares' and features a grid of product categories with images and labels: Air Controls, Ash Pans, Combs & Grate Bar Supports, Door Handles and Locks, Doors & Trims, Door Ropes and Hinges, Fuel Retainers, Grates & Grate bars, and Glass. A 'Shopping Cart' section on the right shows 'You currently have 0 items in your cart' for £0.00 (inc VAT). Below the cart is a 'Latest News' section with a headline 'Arada Expands and Goes Global' and a 'Find a Dealer' button. Social media links for Facebook and Twitter are also present.

GUARANTEE

Once again we would like to thank you for buying a Villager stove.

When you buy a Villager stove, you are not only buying a first class appliance, you are buying a commitment from us to look after you and your appliance.

Villager stoves comes with a FIVE YEAR GUARANTEE against splitting or cracking of the main body. The main body being defined as the steel outer casing and items fixed immovably to the casing.

All other parts, which would be subject to normal wear or tear are excluded from this guarantee. These include the firebox liner panels, fuel retainers, throat plate, door rope, door glass, grate bars, gaskets, hotplate and spigot.

This guarantee shall not apply to any stove that has been altered in any way, or which in our professional judgement has been subjected to misuse, neglect, accident, abuse or excessive wear and tear.

The guarantee is conditional upon the appliance being serviced and checked annually by a qualified heating engineer, with documentation to be retained and produced in the event of a claim being made.

Claims are not valid where installation does not conform with all building regulations in force at the time of purchase. The manufacturers decision shall be final. However, if your appliance proves to be defective as a result of faulty materials or workmanship during the guarantee period, we will repair or replace it FREE OF CHARGE.

THE USE OF SPARE PARTS OTHER THAN THOSE SUPPLIED BY ARADA WILL INVALIDATE THE APPLIANCE WARRANTY.

ARADA WILL NOT BE RESPONSIBLE FOR ANY CONSEQUENTIAL OR INCIDENTAL LOSS, DAMAGE OR INJURY HOWEVER CAUSED.

All guarantee periods commence on the date of purchase and are non-transferable.

Our guarantee is offered as an addition to your statutory rights.

If you think your stove is not operating correctly please contact your local Villager dealer who will have the knowledge and facilities to help you.

When you contact your dealer they will want to know:

1. Your name, address, post code and telephone number.
2. Clear and concise details of the fault.
3. Your proof of purchase, installation and annual servicing details will also be required.

If further information is required, our technical helpline will be pleased to help.

Please telephone: 0844 8475107 -or- email: info@arada.uk.com

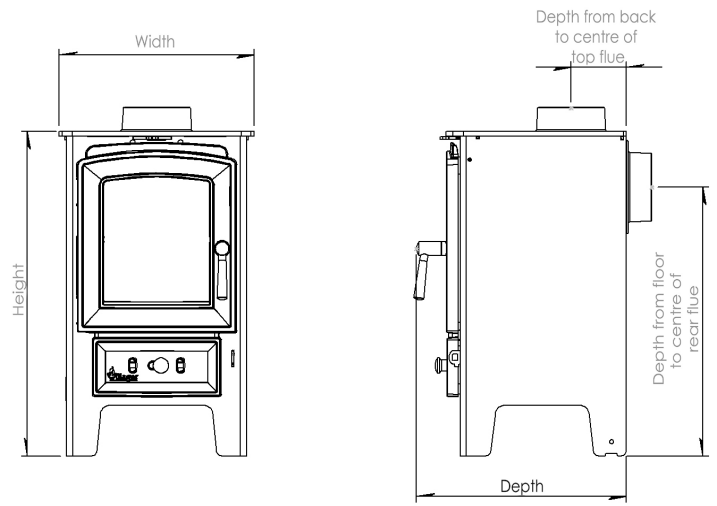
Information is also available at www.arada.uk.com/support



Villager Technical Information

Description	Output kW	Height		Width		Depth		Height to centre of rear flue		Depth from back to centre of top flue	
		mm	inches	mm	inches	mm	inches	mm	inches	mm	inches
Puffin	1 - 4	546	21 ^{1/2}	330	13	355	14	453	17 ^{3/4}	93.5	3 ^{3/4}
Heron	1 - 5	558	22	370	14 ^{1/2}	355	14	465	18 ^{1/2}	93.5	3 ^{3/4}
Esprit Solo 5 Flexifuel	1 - 5	508	20	474	18 ^{3/4}	363	14 ^{1/2}	414	16 ^{1/2}	98	4
Esprit Solo 7 Flexifuel	1.5 - 7	520	20 ^{1/2}	530	20 ^{3/4}	368	14 ^{1/2}	414	16 ^{1/2}	110	4 ^{1/2}
Esprit Solo 8 Flexifuel	1.5 - 8	560	22	608	24	355	14	449	17 ^{1/2}	110	4 ^{1/2}
Esprit Solo 10 Flexifuel	1.5 - 10	575	22 ^{1/2}	695	27 ^{1/2}	372	14 ^{1/2}	464	18 ^{1/2}	110	4 ^{1/2}
Esprit Duo 5 Flexifuel	1 - 5	508	20	474	18 ^{3/4}	363	14 ^{1/2}	414	16 ^{1/2}	98	4
Esprit Duo 7 Flexifuel	1.5 - 7	520	20 ^{1/2}	530	20 ^{3/4}	368	14 ^{1/2}	414	16 ^{1/2}	110	4 ^{1/2}
Esprit Duo 8 Flexifuel	1.5 - 8	560	22	608	24	355	14	449	17 ^{1/2}	110	4 ^{1/2}
Chelsea Solo	1 - 5	495	19 ^{1/2}	457	18	334	13 ^{1/4}	375	14 ^{3/4}	102	4
Chelsea Duo	1 - 5	495	19 ^{1/2}	457	18	334	13 ^{1/4}	375	14 ^{3/4}	102	4
Chelsea HE Solo	1 - 5	518	20 ^{1/2}	462	18 ^{1/4}	347	13 ^{1/2}	409	16 ^{1/2}	105	4
Chelsea HE Duo	1 - 5	518	20 ^{1/2}	462	18 ^{1/4}	347	13 ^{1/2}	409	16 ^{1/2}	105	4
Bayswater	1.5 - 7	540	21 ^{1/4}	601	23 ^{3/4}	360	14 ^{1/4}	425	16 ^{3/4}	137	5 ^{1/2}
C Flat Wood Solo	1 - 5	495	19 ^{1/2}	457	18	334	13 ^{1/4}	395	15 ^{1/2}	102	4
C Flat Wood Duo	1 - 5	495	19 ^{1/2}	457	18	334	13 ^{1/4}	395	15 ^{1/2}	102	4
Flatmate	1.5 - 8	575	22 ^{3/4}	573	22 ^{1/2}	353	14	460	18	110	4 ^{1/4}
A Flat Wood	2 - 14	595	23 ^{1/2}	699	27 ^{1/2}	475	18 ^{3/4}	468	18 ^{1/2}	135	5 ^{1/2}

* Figures shown with an asterisk are in house testing results.



Minimum distance to combustible materials (mm)		Flue Diameter		Nett Efficiency	Mean Flue Gas Temperature	Mean CO Emissions @ 13% O ₂	Add in Boiler (If Available)	Output to Room kW	Output to Water kW
Rear	Side	mm	inches						
-	-	102	4	78%	-	-	AIB0	2.2	1.8
-	-	102	4	76%	-	-	AIB0	3.2	1.8
900	650	102	4	76.6%	253°C	0.33	AIBV018	3.4	1.6
950	700	127	5	73.1%	350°C	0.28	AIBV019	5.4	1.6
850	700	127	5	80.4%	290°C	0.52	AIBV016	5.1	2.9
1100	600	127	5	74.4%	319°C	0.27	AIBV017	6.6	3.4
900	650	102	4	76.6%	253°C	0.33	AIBV018	3.4	1.6
950	700	127	5	73.1%	350°C	0.28	AIBV019	5.4	1.6
850	700	127	5	80.4%	290°C	0.52	AIBV016	5.1	2.9
700	500	127	5	71.7%	348°C	0.15	AIBV007	1.6	3.4
700	500	127	5	71.7%	348°C	0.15	AIBV007	1.6	3.4
700	500	127	5	71%	341°C	0.35	AIBV008	2	3.6
700	500	127	5	71%	341°C	0.35	AIBV008	2	3.6
760	500	127	5	71.7%	343°C	0.16	AIBV009	2.4	4.6
800	750	127	5	79%	260°C	0.49	AIBV007	2.1	2.9
800	750	127	5	79%	260°C	0.49	AIBV007	2.1	2.9
800	600	127	5	78.4%	324°C	0.42	AIBV009	3.4	4.6
1000	1000	152	6	71.5%	406°C	0.75	AIBV001	9.3	4.7

Final Factory Check list

Quality / Finish	
Flue Outlet	
Hot Plate	
Fuel Retainer	
Firebox Liners	
Throat Plate	
Door Catch / Door Handle	
Operating Tool	
Stove Glove	
Grate / Fuel Bed	
Installation Guide	

Model:

Assembled By.....

Checked by.....

We recommend recording where and when you purchased your stove for future reference:
--



The Fireworks
Weycroft Avenue
Axminster
Devon
EX13 5HU
www.aradastoves.com
www.aradastovesandspares.com